

P-6

COMPONENT SYSTEM

High-End 6" 2-way compo system. The woofer, P-6, is based on the famous Scan-Speak „Revelator“ woofer with the unique sliced and coated woodfibre cone and special 6,5" adapter ring, plus the XETEC T-28 Scan-Speak-based tweeter. Both are optimised for car installation and exclusively custom hand-made in Denmark for XETEC. X-overs reside in black aluminium housings. Limited edition!



P-6.5

COMPONENT SYSTEM

High-End 6,5" 2-way compo system. The woofer, P-6.5, is a newly designed glassfibre cone woofer in a 6,5" magnesium basket, plus the XETEC T-28 Scan-Speak-based tweeter. Both are optimised for car installation and exclusively custom hand-made in Denmark for XETEC. The X-overs have black aluminium housings.



T-20

TWEETER

Frequency range 3,8 - 20 kHz
Res. Freq. 2,2 kHz
Power Handling (max.) 50 Watt
Impedance 4 Ohm
Outer diameter 41 mm.



T-26

TWEETER

Frequency range 2,8 - 26 kHz
Res. Freq. 1,3 kHz
Power Handling (max.) 60 Watt
Impedance 4 Ohm
Outer diameter 44 mm.



T-28

TWEETER

Frequency range 1 - 28 kHz
Res. Freq. 0,6 kHz
Power Handling (max.) 120 Watt
Impedance 4 Ohm
Outer diameter 54 mm.



TWEETERS

WOOFERS

X-2

CROSSOVER

The X-2 is different from all other speaker X-overs due to the various options of adjustments and adaption of a variety of tweeters and woofers. That offers new possibilities to form your personal speaker system as well as individual sound performance.



TWEETERS

WOOFERS

HIGH QUALITY: MKT and aircoils, metal film resistors, aluminium heatsink
CONFIGURABLE: jumpers to adapt to the mounting situation and to the connected speaker systems
FUTURE PROOF: fits all tweeters and woofers of the GRAVITY series. Can be used for future speaker systems as well.



TWEETERS

WOOFERS

G-4

WOOFER

Impedance 4 Ohm
Power Handling 80 Watt
Peak Power 100 Watt
SPL 86 dB
Lowest frequency 100 Hz
Diameter 100 mm
Depth 52 mm.



G-5

WOOFER

Impedance 4 Ohm
Power Handling 100 Watt
Peak Power 120 Watt
SPL 88 dB
Lowest frequency 65 Hz
Diameter 130 mm
Depth 55 mm.



G-6

WOOFER

Impedance 4 Ohm
Power Handling 120 Watt
Peak Power 150 Watt
SPL 90 dB
Lowest frequency 45 Hz
Diameter 165 mm
Depth 71 mm.



G-10 XLS

SUBWOOFER

Model 4 Ohm
Impedance-minimum 3,2 Ohm
Power Handling 350 Watt
Peak Power 550 Watt
SPL 91 dB
Res. Freq. 39 Hz.



G-12 XLS

SUBWOOFER

Model 4 Ohm
Impedance-minimum 3,2 Ohm
Power Handling 500 Watt
Peak Power 750 Watt
SPL 93 dB
Res. Freq. 28 Hz.



G-10 XLS G

SUBWOOFER

10" Subwoofer with 27 lt vented Trunk Box, 350 Wrms @ 4 Ohm..



G-12 XLS G

SUBWOOFER

12" Subwoofer with 35 lt vented Trunk Box, 500 Wrms @ 4 Ohm.



X-4.2

COMPONENT SYSTEM

4,25" 2-way compo with XETEC glassfibre woofer and the new T-20 20 mm soft dome tweeter. Complete stereo set, with all accessories like X-1 crossover, grilles and screws.



X-6.2

COMPONENT SYSTEM

6,5" 2-way compo with XETEC glassfibre woofer and the new T-20 20 mm soft dome tweeter. Complete stereo set, with all accessories like X-1 crossover, grilles and screws.



X-10 S

SUBWOOFER

10" 1x250 Wrms, 4 Ohm per coil, optimised for 20 lt enclosure. Made in Germany.



X-5.2

COMPONENT SYSTEM

5,25" 2-way compo with XETEC glassfibre woofer and the new T-20 20 mm soft dome tweeter. Complete stereo set, with all accessories like X-1 crossover, grilles and screws.



X-8 S

SUBWOOFER

8" 1x200 Wrms, 4 Ohm per coil, optimised for 12 lt enclosure. Made in Germany.



X-12 S

SUBWOOFER

12" 1x300 Wrms, 4 Ohm per coil, optimised for 30 lt enclosure. Made in Germany.



X-10

SUBWOOFER

4 Ohm, for 27 lt closed enclosure
Power Handling 150 Watt SPL 90 dB
Res.Freq. 38 Hz.



X-10 G

SUBWOOFER

10" Subwoofer with 27 lt closed Trunk Box, 150 Wrms @ 4 Ohm.



X-12 G

SUBWOOFER

12" Subwoofer with 35 lt closed Trunk Box, 200 Wrms @ 4 Ohm.



X-12

SUBWOOFER

4 Ohm, for 35 lt closed enclosure
Power Handling 200 Watt SPL 91 dB
Res.Freq. 29 Hz.



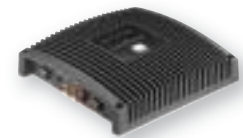
XETEC

ALWAYS AHEAD!

P-2

STATE-OF-THE-ART 2-CH MOSFET AMPLIFIER

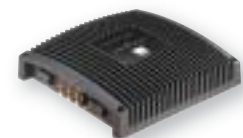
2 x 200 W/4 Ohm
2 x 550 W/1 Ohm
Damping Factor >350
Highpass 30-4000 Hz
Lowpass 30-4000 Hz
Full Active Mode
Bridge mode
Top control
Bass Level Remote (BLC)
0,2-6 V input sensitivity



P-4

STATE-OF-THE-ART 4-CH MOSFET AMPLIFIER

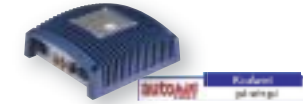
4 x 120 W/4 Ohm
2 x 200 W/4 Ohm
Damping Factor >420
Highpass 30-4000 Hz
Lowpass 30-4000 Hz
Full Active Mode
Bridge mode
Top control
0,2-6 V input sensitivity



4G-300 MK2

REFERENCE 4-CH LINEAR AMPLIFIER

4 x 80 W/4 Ohm
4 x 100 W/2 Ohm
Highpass 15-200 Hz
Lowpass 40-200 Hz
Bridge mode
Top control
Bal/Unbal. inputs
0,2-6 V input sensitivity



G-500 MK2

DIGITAL MONO SUBWOOFER AMPLIFIER

1 x 390 W/4 Ohm
1 x 560 W/2 Ohm
High efficiency
Subsonic 10-50 Hz
Lowpass 40-200 Hz
1-Band Parametric EQ
Bass Level Remote (BLC)
Bal/Unbal. inputs
0,2-6 V input sensitivity



CAR EQ MODULE

THE „ACOUSTIC-FINGERPRINT“ OF YOUR CAR!

Car model specific Equalizer module
Turns „sound“ into „Hifi“!
Plug-and-play
Applicable in 4G-300,
4G-600, 5-G-900
USC, F.A.C.T. F-3®



4G-600 MK2

REFERENCE 4-CH LINEAR AMPLIFIER

4 x 110 W/4 Ohm
4 x 180 W/2 Ohm
Highpass 15-200 Hz
Lowpass 40-200 Hz
Bridge mode
Top control
Bal/Unbal. inputs
0,2-6 V input sensitivity



G-1200 MK2

DIGITAL MONO SUBWOOFER AMPLIFIER

1 x 450 W/4 Ohm
1 x 1225 W/1 Ohm
High efficiency
Subsonic 10-50 Hz
Lowpass 40-200 Hz
1-Band Parametric EQ
Bass Level Remote (BLC)
Bal/Unbal. inputs
0,2-6 V input sensitivity



5G-900 MK2

DIGITAL / ANALOG 5-CH AMPLIFIER

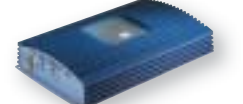
4 x 100 W/4 Ohm //
2 x 200 W/4 Ohm bridge +
1 x 390 W/4 Ohm // 1 x 560 W/2 Ohm
Damping Factor >200
Highpass 15-200 Hz
Lowpass 40-200 Hz
Subsonic 10-50 Hz
Subwoofer Lowpass 40-200 Hz,
1-Band Parametric EQ, Bass Level Remote
(BLC), Bal/Unbal. inputs
0,2-6 V input sensitivity



XI-240.2

PREMIUM 2-CH LINEAR AMPLIFIER

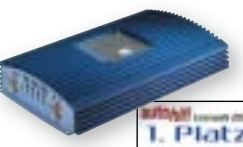
2 x 125 W/4 Ohm
1 x 380 W/4 Ohm
Highpass 25-6000 Hz
Lowpass 50-6000 Hz
Bridge mode
2-Ohm stable
0,3-4 V input sensitivity



XI-240.4

PREMIUM 4-CH LINEAR AMPLIFIER

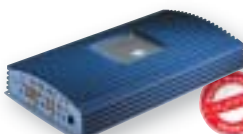
4 x 70 W/4 Ohm
2 x 185 W/4 Ohm
Highpass 25-6000 Hz
Lowpass 50-6000 Hz
Bridge mode
2-Ohm stable
0,3-4 V input sensitivity



XI-440.5

PREMIUM 5-CH LINEAR AMPLIFIER

4 x 65 W/4 Ohm +
1 x 185/250 W
2-Ohm stable
Highpass 25-6000 Hz
Lowpass 50-6000 Hz
Bridge mode
Bass Level Remote (BLC)
0,3-4 V input sensitivity



V-150.2

ENTRY LINE 2-CH LINEAR AMPLIFIER

2 x 75 W/4 Ohm
2 x 90 W/2 Ohm
1 x 180 W bridge/4 Ohm
2-Ohm stable Bass Boost
Highpass 32-320 Hz
Lowpass 32-320 Hz
0,2-4 V input sensitivity



V-200.4

ENTRY LINE 4-CH LINEAR AMPLIFIER

4 x 50 W/4 Ohm
2 x 125 W bridge/4 Ohm
2-Ohm stable
Highpass 32-320 Hz
Lowpass 32-320 Hz
0,2-4 V input sensitivity



V-350.6

ENTRY LINE 6-CH LINEAR AMPLIFIER

4 x 50 W/4 Ohm +
2 x 75 W/4 Ohm
2-Ohm stable
Highpass 32-320 Hz
Lowpass 32-320 Hz
Subwoofer Bass Boost
Lowpass 40-200 Hz



F.A.C.T. F-3

FULL ACTIVE 3-WAY CROSSOVER

Activate your speakers! The XETEC F.A.C.T.® concept („Full Active Crossover Technology“) represents the top of active speaker system technology.

With F-3, a 3-way full active system can be created, using either tweeters, woofers and midbasses, or alternatively subwoofers.

F-3 operates with special developed 12 dB Linkwitz-Riley filter characteristics, that allows optimal sound quality and linearity. Separate phaseadjusts (<180°/0°/+180°) for each left and right tweeter allows perfect time alignment and fine tuning.

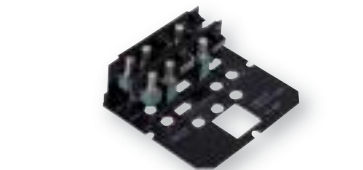
Additionally, the F-3 can be used as a car EQ® adapter, as it has a module slot inside for that purpose. Selectable balanced / unbalanced inputs provide noise immunity.



ACTIVE

KIT GRAVITY

Get active! All GRAVITY series multi-channel models are prepared for the **FULL ACTIVE FILTER KIT** to replace the front and rear Highpass/Lowpass filter boards. With the GRAVITY ACTIVE KIT you can build full active systems without any external active crossover or accessory.



DSP-5800

Expand your horizon! THE XETEC DSP-5800 IS A DIGITAL PROCESSOR WITH REMOTE DISPLAY.

Yamaha-based 24 bit/96 kHz D/A and A/D conversion provides top sound quality. The „Dolby Digital“ and „Prologic-2“ as well as DTS functions make it a perfect processing tool for DVD-5.1 surround as well as any stereo sources.

Three selectable audio and video inputs make the DSP-5800 the sound management center for your system.

Time-delay functions allow a perfect time-alignment of the surround as well as stereo setup. Amazing!



USC

Get adapted! The XETEC USC is a „UNIVERSAL SIGNAL CONVERTER“ and can perform many

helpful jobs in an installation, especially when the original factory radio has to be kept. The tasks: 4-ch High-power adapter with 6-ch output; Subwoofer level remote adapter (BLC); 4-ch Line driver; car EQ® adapter.



CAR EQ MODULE

THE „ACOUSTIC FINGERPRINT“ OF YOUR CAR!

The sensational car EQ® modules offer 12 parametric equalizer bands in the shape of a tiny module with fixed adjustments fitting particular car models. Car EQ® knows and compensates the acoustical problems of your car model - regardless of the installed speakers. Optimize your sound system. Car EQ® is the key to „Hifi“ in your car. Car EQ® is easy to handle, and applicable with all 4- and 5-channel GRAVITY amplifiers, as well as the F.A.C.T.® F-3 active X-over, and the XETEC USC.



PARAQ-7 MK2

PARAMETRIC EQUALIZER

Get „Hifi“ into your car! Resonance and reflections in the car add up to the music signal and thus have to be removed again in order to get the „Hifi“ quality back. The ParaQ-7 is the universal tool for the optimisation of sound quality in a car's acoustic environment. The additional subsonic filter and phase shift for the subwoofer channel offer various options to significantly improve sound quality. ParaQ-7 is not a toy, it's a professional tool.

